

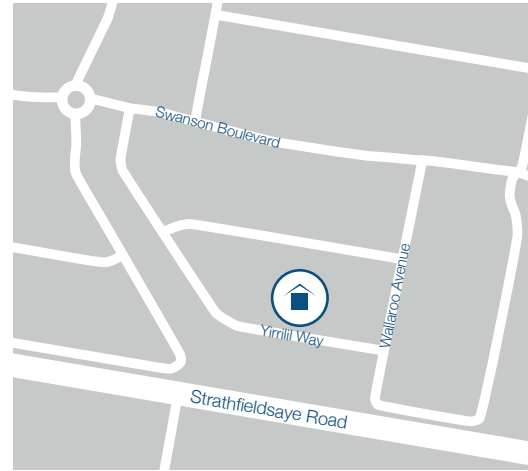
Trust Southern Vale Homes

For over 20 years, Southern Vale Homes has been proud to offer unrivalled flexibility in creating your new home.

Our award-winning team of in-house drafting and design specialists can customise any existing plan from our portfolios to suit your distinct requirements.

Discover what we can do for you!

southernvale.com.au
1300 888 003



Visit our Bendigo display office

Vantage 33+

7 Yirrilil Way,
Imagine Estate,
Strathfieldsaye
03 5407 2297



Bendigo

7 Yirrilil Way, Strathfieldsaye
03 5407 2297

Sydney

Unit 14/151 Hartley Road, Smeaton Grange
02 4631 5800

Griffith

446A Banna Avenue, Griffith
02 5908 1380

Albury Wodonga

1a Moorefield Park Drive, Wodonga
02 6051 5000

Shepparton

211 High Street, Shepparton
03 5831 6710

Ulladulla

Shop 6, Ulladulla Lifestyle Centre
159-161 Princes Hwy, Ulladulla
02 4454 2904

All drawings, images, photography are for illustrative purposes and should be used as a guide only. Floor plan may vary depending on the facade chosen. Southern Vale Homes reserves the right to revise plans, specifications and prices without notice or obligation.

abn 89 150 500 557 | vic lic. DBU6240 | nsw lic. 259700C



Welcome to **Vantage 33+**



Imagine Estate
Strathfieldsaye

Vantage 33+



4 3 2 2



Allure
Façade upgrade available

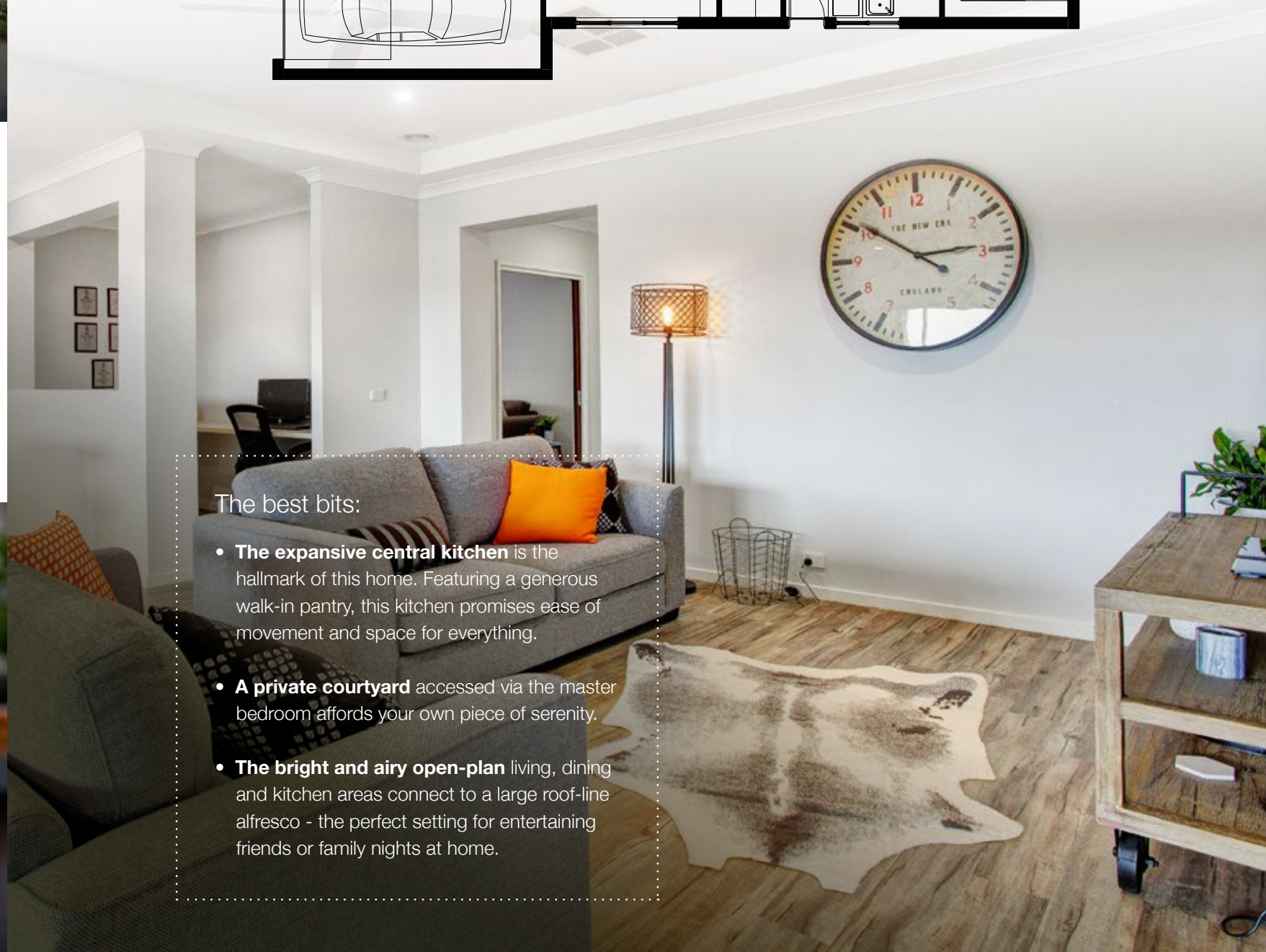
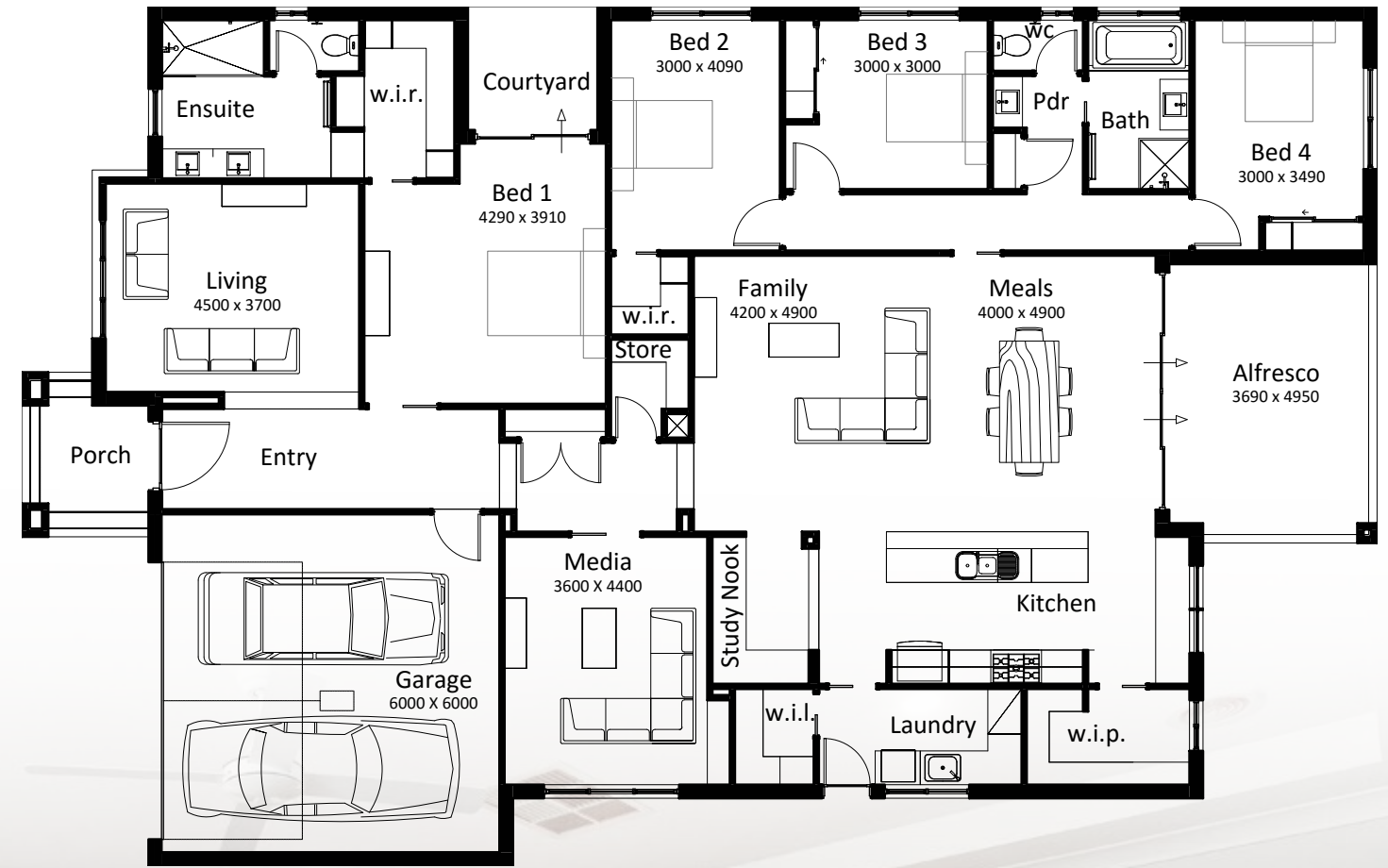
A **spacious** home designed for those seeking the **perfect balance** of luxury and practicality.

The Vantage is designed with modern families at heart, with features like the centralised study nook, theatre, extra-large laundry and clever storage at every turn.

The expansive master bedroom boasts a generously-sized ensuite, large walk-in wardrobe and private courtyard area.

Three more bedrooms, bathroom and powder room are zoned towards the side of the home.

Living	242.12m ²	26.06sq
Alfresco	18.06m ²	1.94sq
Courtyard	5.04m ²	0.54sq
Porch	5.58m ²	0.64sq
Garage	39.16m ²	4.22sq
Total	310.36m²	33.41sq
House width	15.25m	
House length	24.06m	



The best bits:

- **The expansive central kitchen** is the hallmark of this home. Featuring a generous walk-in pantry, this kitchen promises ease of movement and space for everything.
- **A private courtyard** accessed via the master bedroom affords your own piece of serenity.
- **The bright and airy open-plan** living, dining and kitchen areas connect to a large roof-line alfresco - the perfect setting for entertaining friends or family nights at home.

