

House & Land Package



Kialla

Esperence 23 From \$374,150*

The Esperence series covers a well appointed small to medium house requirement with a hint of something different.

All Essentials Inclusions PLUS

- ✓ Caesar Stone bench tops to kitchen
- ✓ Carpet and Tiling throughout
- ✓ Colorbond roofing
- ✓ Concrete driveway and crossover
- ✓ Dishwasher
- ✓ Heating & Cooling
- ✓ TV aerial, brick letterbox, clothesline
- ✓ Flyscreens to all opening doors and windows



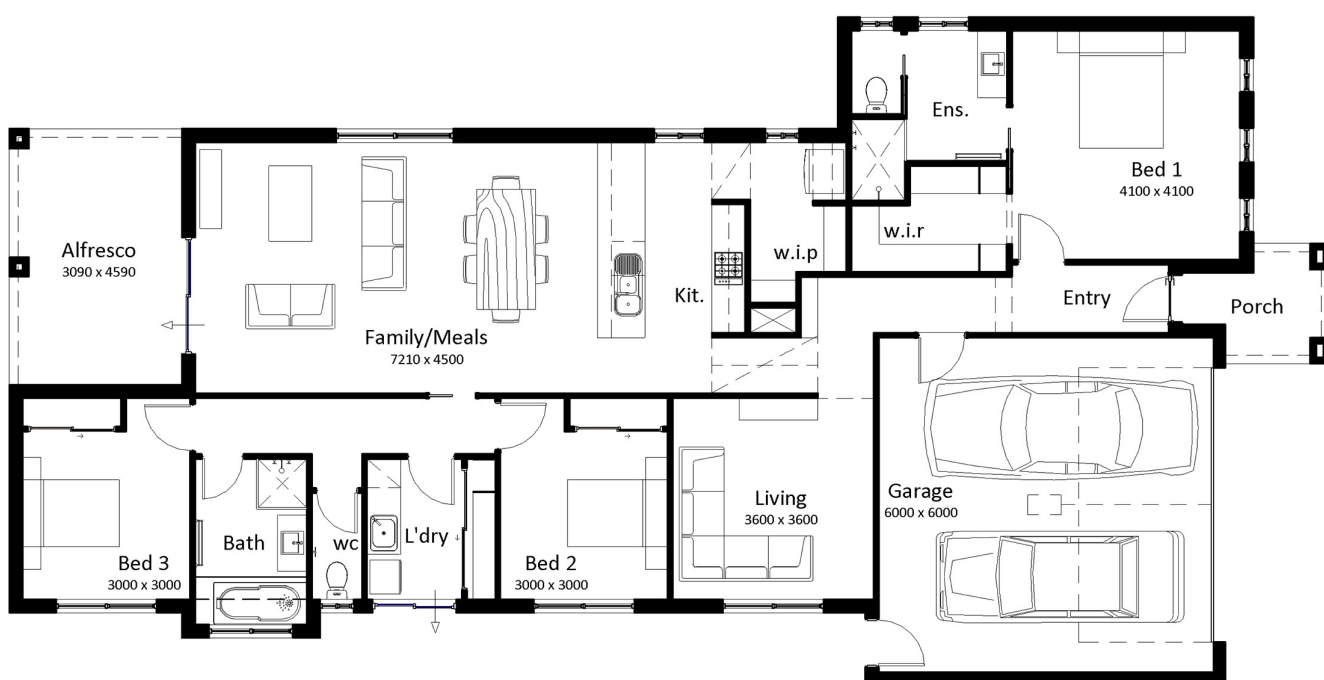
Essentials facade

Living	160.61m ²	17.29sq
Alfresco	14.18m ²	1.53sq
Porch	4.46m ²	0.48sq
Garage	39.38m ²	4.24sq
Total	218.63m²	23.53sq

House width 11.98m

House length 23.66m

Riverwood Park: Lot 647 Coolibah court (740m²)
Kialla, VIC 3631



- 3
- 2
- 2
- 2

Find out more

Kerry Senior
ksenior@southernvale.com.au
0407673158
southernvale.com.au

*All drawings, images, photography are for illustrative purposes and should be used as a guide only. Floor plan may vary depending on the facade chosen. Southern Vale Homes reserves the right to revise plans, specifications and prices without notice or obligation. Foundation engineering to be confirmed upon soil test. Price excludes stamp duty on land and pre-title discount. ABN: 89 150 500 57 Licence No. VIC: DBU 6240 NSW: 259700C