

House & Land Package



Kialla

Riverside 31 From \$437,000*

What a magnificent home. The Riverside is full of style and functionality that will be sure to be a talking point amongst friends.

All Essentials Inclusions PLUS

- ✓ Caesar Stone bench tops to kitchen
- ✓ Colorbond roofing
- ✓ Dishwasher
- ✓ Driveway
- ✓ Tiled Shower Bases
- ✓ Heating & Cooling
- ✓ Carpets and tiling throughout
- ✓ TV aerial, brick letterbox, clothesline



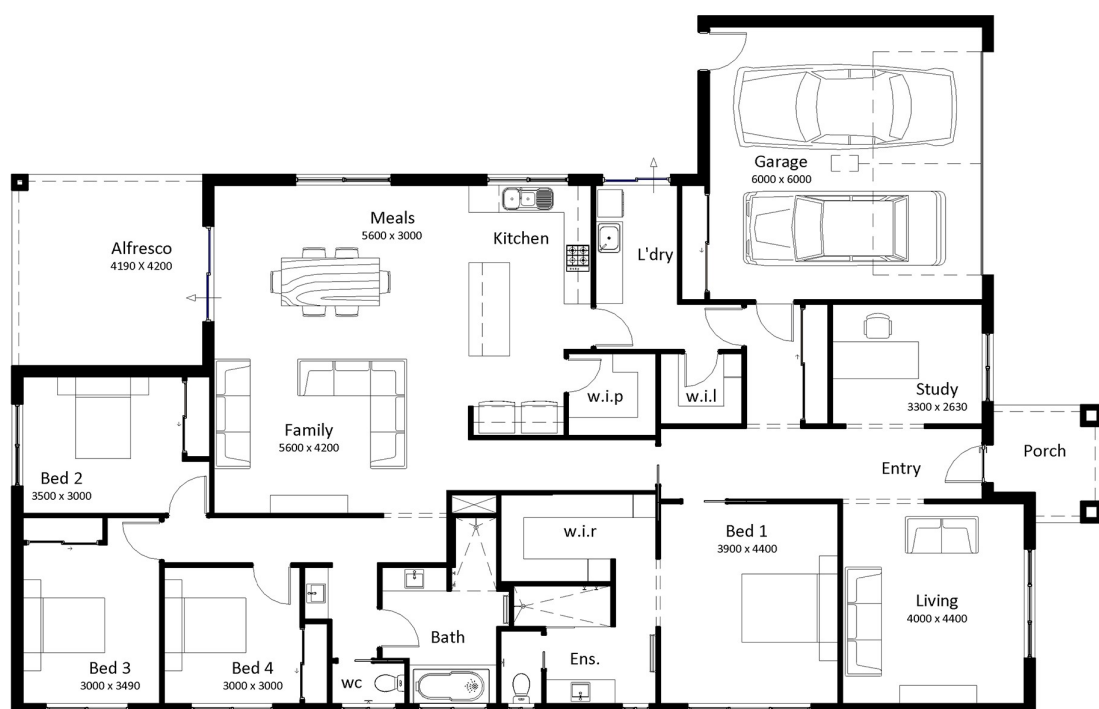
Essentials facade

Living	223.60m ²	24.07sq
Alfresco	17.60m ²	1.89sq
Porch	5.58m ²	0.60sq
Garage	41.43m ²	4.46sq
Total	288.20m²	31.02sq

House width 15.34m

House length 23.94m

Kialla Lakes: lot 1143 Sancturay Drive (988m²)
Kialla, VIC 3631



- 4
- 2
- 2
- 2

Find out more

Kerry Senior
ksenior@southernvale.com.au
0407673158
southernvale.com.au