

House & Land Package



📍 West Wodonga

Pasco 23 From \$380,000*

The Simple but classic Pasco range offers both three & four bedroom options in a functional & economic design series.



Essentials facade

All Essentials Inclusions PLUS

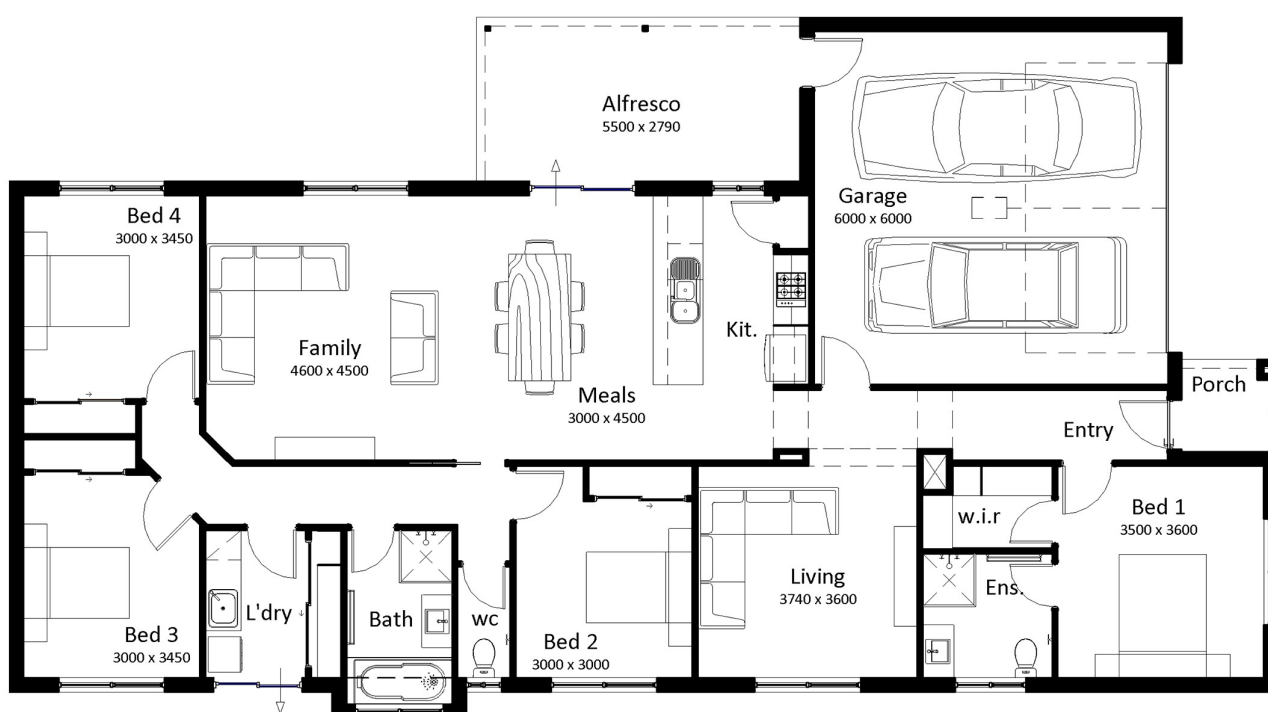
- ✓ Heating & Cooling
- ✓ Carpet and Tiling throughout
- ✓ Colorbond roofing
- ✓ Concrete driveway and crossover
- ✓ Siteworks & connections
- ✓ NBN
- ✓ TV aerial, brick letterbox, clothesline
- ✓ Dishwasher

Living	158.81m ²	17.09sq
Alfresco	15.35m ²	1.65sq
Porch	2.57m ²	0.28sq
Garage	39.61m ²	4.26sq
Total	216.34m²	23.29sq

House width 11.91m

House length 21.55m

Daintree Estate: Lot 614 Roper Street (568m²)
West Wodonga, VIC 3690



- 4
- 2
- 2
- 2

Find out more

Dylan Beaver
dbeaver@southernvale.com.au
0418 597 329
southernvale.com.au

*All drawings, images, photography are for illustrative purposes and should be used as a guide only. Floor plan may vary depending on the facade chosen. Southern Vale Homes reserves the right to revise plans, specifications and prices without notice or obligation. Foundation engineering to be confirmed upon soil test. Price excludes stamp duty on land and pre-title discount. ABN: 89 150 500 57 Licence No. VIC: DBU 6240 NSW: 259700C