

House & Land Package



📍 Wodonga

Preston 29 From \$445,000*

The Preston Series boasts 4 Bedrooms plus Study, 3 Living areas for the family to spread out and a Huge Alfresco area for entertaining. Enquiries please call 0418 597 329

All Essentials Inclusions PLUS

- ✓ Heating & Cooling
- ✓ Carpet and Tiling throughout
- ✓ Colorbond roofing
- ✓ Concrete driveway and crossover
- ✓ Siteworks & connections
- ✓ NBN
- ✓ Stone benchtops
- ✓ Facade Upgrade



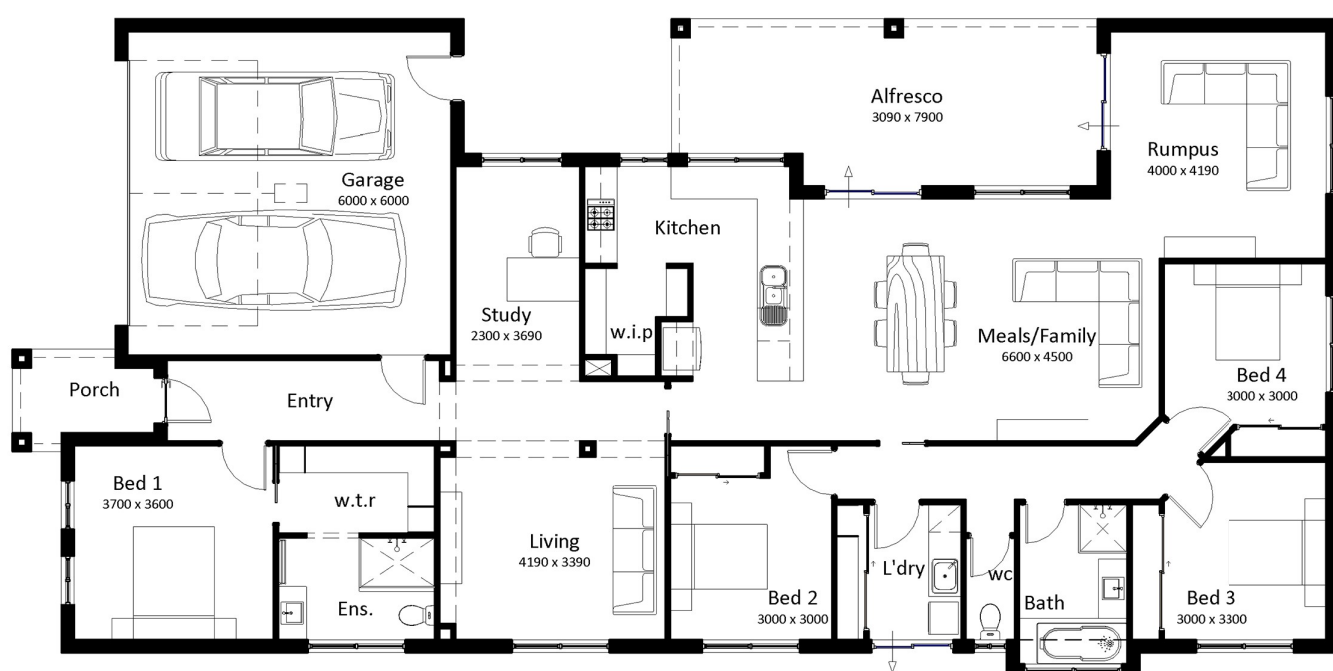
Sienna facade

Living	199.10m ²	21.43sq
Alfresco	22.95m ²	2.47sq
Porch	4.12m ²	0.44sq
Garage	39.65m ²	4.27sq
Total	265.82m²	28.61sq

House width 12.21m

House length 24.60m

White Box Rise: Lot 2412 Lowerson Way (696m²)
Wodonga, VIC 3690



- 4
- 3
- 2
- 2

Find out more

Dylan Beaver
dbeaver@southernvale.com.au
0418 597 329
southernvale.com.au