

House & Land Package



📍 Wodonga

Seacrest 23 From \$391,000*

The Seacrest, being under 11m wide is a great solution for a narrow block. With both 3 & 4 bedroom options it offers a functional building solution. Enquiries please call 0418 597 329

All Essentials Inclusions PLUS

- ✓ Heating & Cooling
- ✓ Carpet and Tiling throughout
- ✓ Colorbond roofing
- ✓ Concrete driveway and crossover
- ✓ Siteworks & connections
- ✓ NBN
- ✓ TV aerial, brick letterbox, clothesline
- ✓ Dishwasher

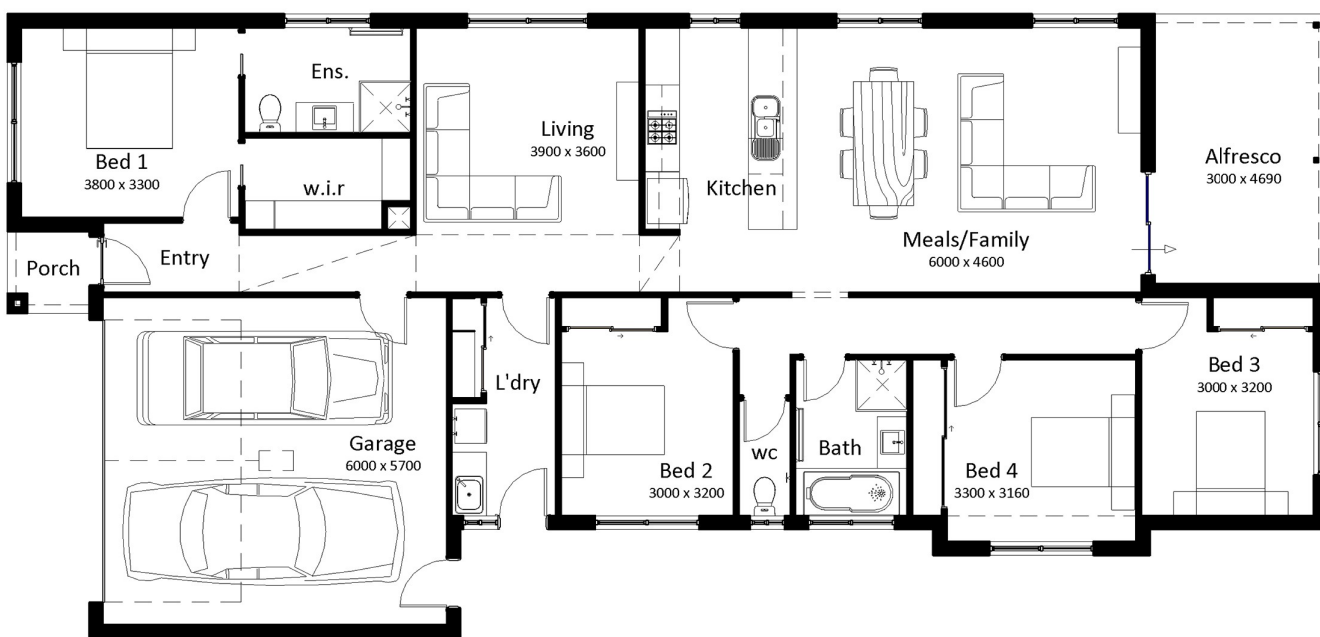


Essentials facade

Living	161.35m ²	17.37sq
Alfresco	14.07m ²	1.51sq
Porch	2.04m ²	0.22sq
Garage	37.46m ²	4.03sq
Total	214.93m²	23.14sq

House width 10.87m
House length 23.00m

White Box Rise: Lot 2206 Throssell Crescent (568m²)
Wodonga, VIC 3690



- 4
- 2
- 2
- 2

Find out more

Dylan Beaver
dbeaver@southernvale.com.au
0418 597 329
southernvale.com.au

*All drawings, images, photography are for illustrative purposes and should be used as a guide only. Floor plan may vary depending on the facade chosen. Southern Vale Homes reserves the right to revise plans, specifications and prices without notice or obligation. Foundation engineering to be confirmed upon soil test. Price excludes stamp duty on land and pre-title discount. ABN: 89 150 500 57 Licence No. VIC: DBU 6240 NSW: 259700C